



**Hampstead Way, Hampstead Garden Suburb,  
NW11**

**Monthly Rental Of £11,500**



800 finchley road, hampstead garden suburb, london, nw11 7tj

telephone 020 8458 5000 facsimile 020 8209 2068

email [sales@litchfields.com](mailto:sales@litchfields.com) web [litchfields.com](http://litchfields.com)

offices also in crouch end & highgate



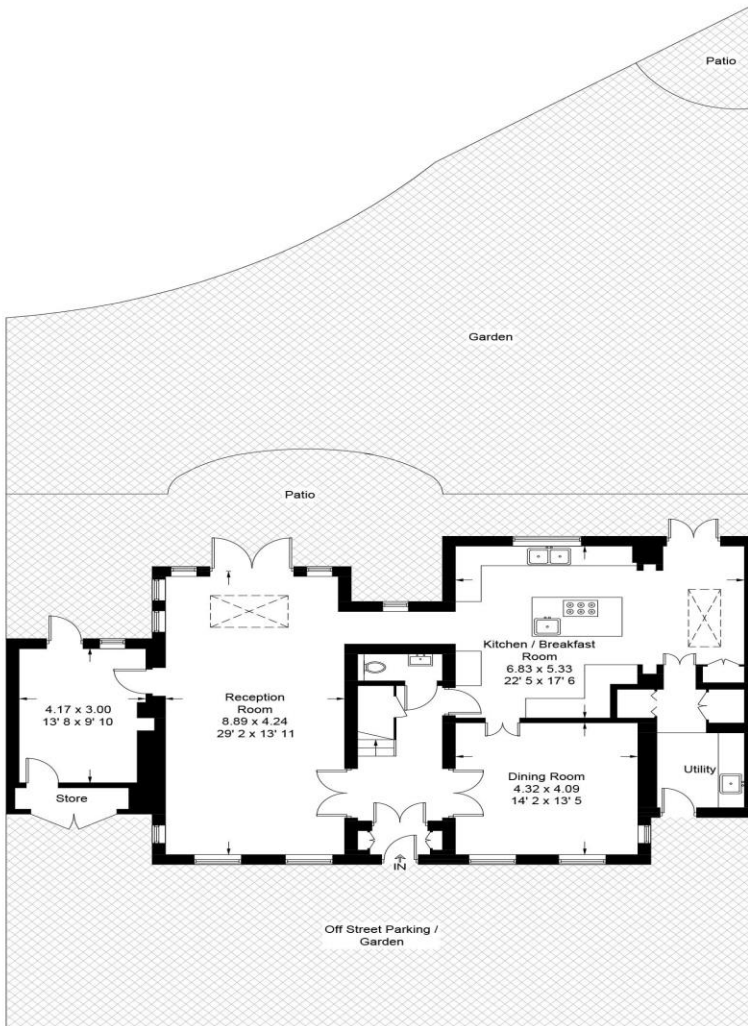
**A superb and imposing Five Bedroomed double fronted detached family residence, approx. 2,712 Sq Ft (252 Sq M). Placed on this prestigious road moments from the open spaces of The Heath Extension and a short walk to the extensive shopping amenities of Temple Fortune & Golders Green Underground Station on the Northern Line. Recently refurbished to exacting standards and featuring wood floors throughout the ground floor. Comprising entrance hall, spacious double reception room, dining room, TV room, state of the art recently fitted kitchen/breakfast room with high tech appliances, utility room, guest cloakroom. First floor comprises a sumptuous master bedroom with luxury en-suite bathroom and separate oversized shower cubicle and dressing room, two further double bedrooms and a modern family bathroom; second floor comprises two double bedrooms both with en-suite shower rooms. To the rear is a lovely landscaped garden with patio areas and to the front of the house is off street parking for two cars. Viewing of this lifestyle home is highly recommended. Offered unfurnished. EPC C.**

**Five Bed Detached House | Three Reception Rooms | State of the Art Kitchen/Breakfast Room | Four Bathrooms (Three En-Suite) | Guest Cloakroom & Utility Room | Wood Floors throughout ground floor | Moments from the Heath Extension | Short walk to Temple Fortune & Golders Green Tube | Landscaped rear garden | OSP x Two Cars | Unfurnished |**

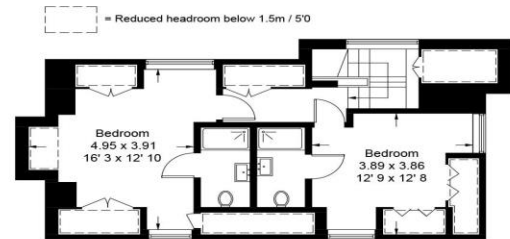


## Hampstead Way

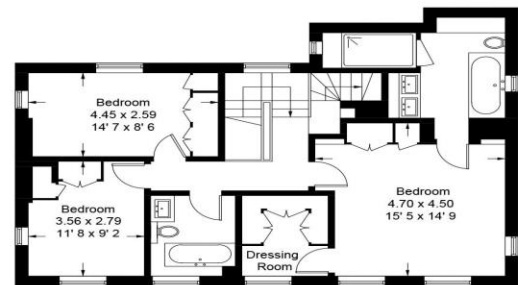
Approximate Gross Internal Area = 2609 sq ft / 242.4 sq m  
(Excluding Reduced Headroom)  
Reduced Headroom = 103 sq ft / 9.6 sq m  
Total = 2712 sq ft / 252 sq m



**Ground Floor**  
1465 sq ft / 136.1 sq m



**Second Floor**  
416 sq ft / 38.7 sq m  
(including Reduced Headroom)



**Front Floor**  
831 sq ft / 77.2 sq m

Not to scale, for guidance only and must not be relied upon as a statement of fact  
All measurements and areas are approximate only and have been prepared in  
accordance with the current edition of the RICS Code of Measuring Practice





